

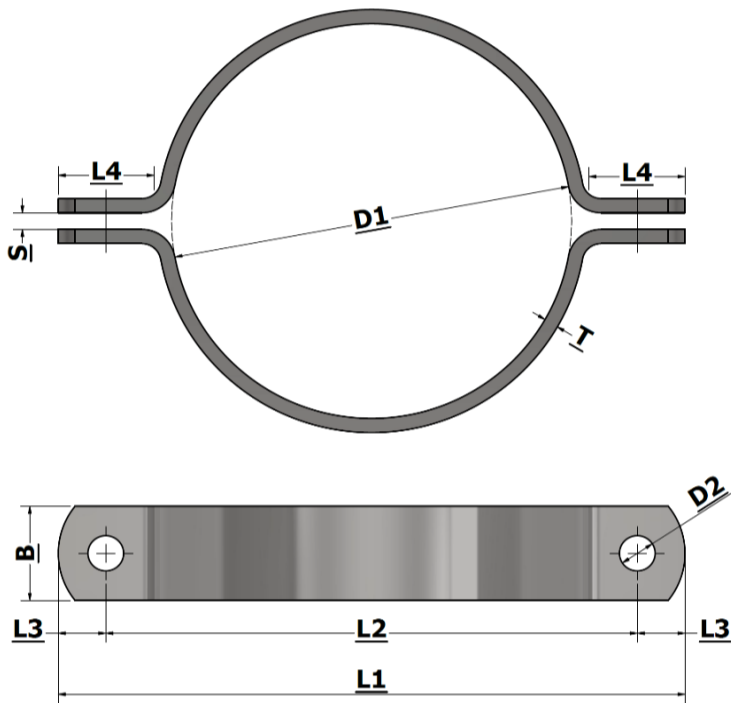
Halsjern Pipe clamp



Todelt fladståls rørbøjle
Fås sorte, primet, galvaniseret,
rustfri AISI 304L og AISI 316L



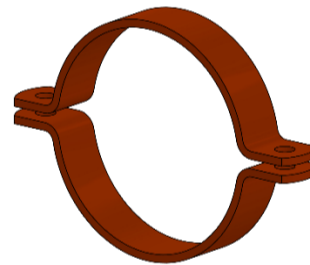
Two-part pipe clamp
Black, primed, hot-dip galvanized,
stainless AISI 304L and AISI 316L



Str. / Size	Rørdiameter / Pipediameter	DN str. / DN size	Tomme str. / Inch size	Bredde / Width	Tykkelse/ Thickness	Luft / Space	L1	L2	L3	L4	Bolt hul / Bolt hole	Bolt
D1 (mm)	(mm)	(mm)	(tommer)	B (mm)	T (mm)	S (mm)	(mm)	(mm)	(mm)	(mm)	D2 (mm)	(mm)
120	120			70	15	12	310	230	40	80	27	M24
122	122			70	15	12	312	232	40	80	27	M24
129	129			70	15	12	319	239	40	80	27	M24
133	133,1	100		70	15	12	323	243	40	80	27	M24
140	139,7	125	5	70	15	12	330	250	40	80	27	M24
146	146			70	15	12	336	256	40	80	27	M24
154	154			70	15	12	344	264	40	80	27	M24
159	159	125		70	15	12	349	269	40	80	27	M24
168	168,3	150	6	70	15	12	358	278	40	80	27	M24
178	177,8			70	15	12	368	288	40	80	27	M24
194	193,7	175	7	70	15	12	384	304	40	80	27	M24
200	200			70	15	12	390	310	40	80	27	M24
220	219,1	200	8	70	15	12	410	330	40	80	27	M24
225	225			70	15	12	415	335	40	80	27	M24
245	244,5	200		70	15	12	435	355	40	80	27	M24
250	250			70	15	12	440	360	40	80	27	M24
267	267	200		70	15	12	457	377	40	80	27	M24
273	273	250	10	70	15	12	463	383	40	80	27	M24
300	300			70	15	12	490	410	40	80	27	M24
318	318			70	15	12	508	428	40	80	27	M24
324	323,9	300	12	70	15	12	514	434	40	80	27	M24
356	355,6	350	14	70	15	12	546	466	40	80	27	M24
368	368	350		70	15	12	558	478	40	80	27	M24
406	406,4	400	16	70	15	12	596	516	40	80	27	M24
419	419	400	16 1/2	70	15	12	609	529	40	80	27	M24
457	457,2	450	18	70	15	12	647	567	40	80	27	M24
470	470			70	15	12	660	580	40	80	27	M24
508	508	500	20	70	15	12	698	618	40	80	27	M24
521	521			70	15	12	711	631	40	80	27	M24
610	610	600	24	70	15	12	800	720	40	80	27	M24
711	711,2	700	28	70	15	12	901	821	40	80	27	M24
813	813	800	32	70	15	12	1003	923	40	80	27	M24



Sort
Black



Primet
Primed



Galvaniseret
Hot-dip galvanized



Rustfri AISI 304L/316L
Stainless AISI 304L/316L

